



Ripple Stone Grey

Ripple Stone grey is made from Gregorio marble which has undergone treatment to give it an irregular rippled effect. Available in two different sizes this stone is particularly appropriate for use in landscape design, near or as part of a water feature.

Use	Applications	Finishes
- internal - external	- walls	- ripple

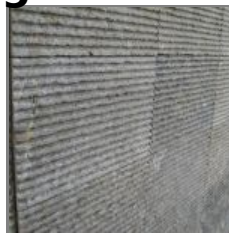
Available Sizes

- 305 x 200 x 20mm
- 600 x 400 x 18mm

Specifications

- Weight: 41Kg/m²

Gallery Images



Sareen Stone NSW Pty. Ltd.

P: (02) 9736-1833
F: (02) 9736-2260
E: info@sareenstone.com.au

Showroom Address

86 Nirranda Street,
Concord West
NSW Australia 2138

Showroom hours

Monday-Friday 8:30am-5pm
Saturday 9am-1pm - by appointment only
P: (02) 9736-1833 to make an appointment

[Sitemap](#)